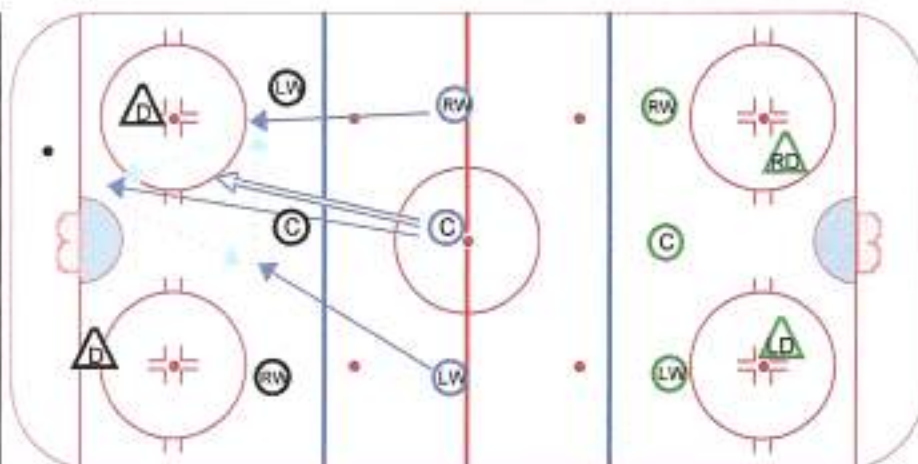


Title : Continuous/forecheck/brea Content elements:

Components :

**Description**

Game can be played with 3 units of 5 if possible.  
 Or like in my situation with only 4-5 D available. 2 D stay at each end and work the breakout only.  
 - one puck BLUE dumps puck in and forecheck in team forecheck structures.  
 - Black line must carry puck out over the blue line  
 - This point BLUE line retreats and sets up for the breakout from the green line.  
 - BLACK line then dumps the puck in GREEN end at now forechecks the GREENS.  
 - GREEN line must breakout over blue line and dumps puck and forecheck blue line.  
 Play continues goals can be scored by forecheckers



Key Points :