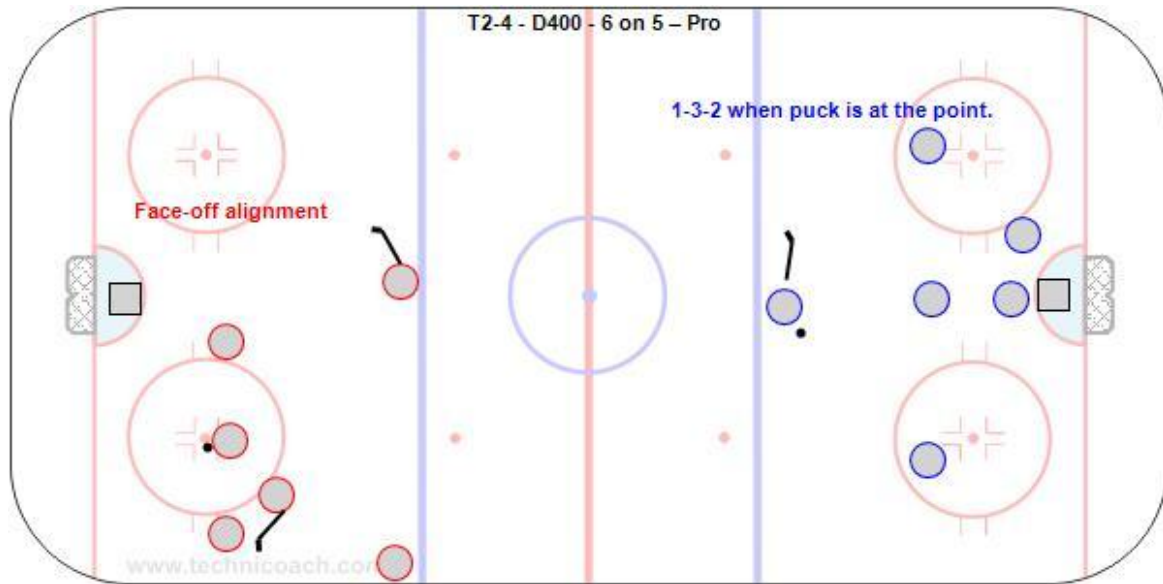


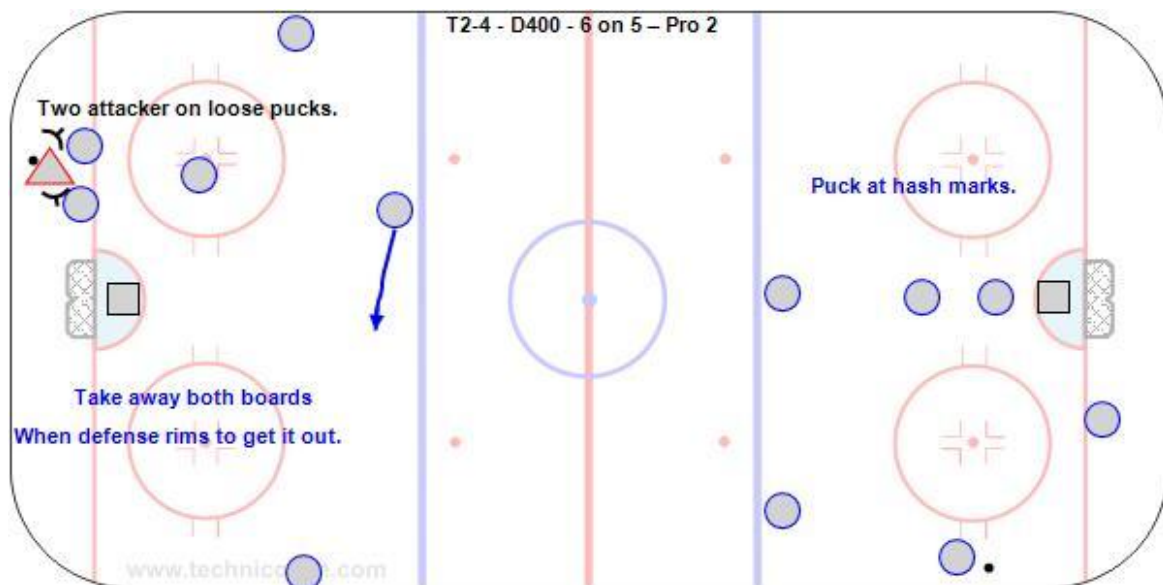
T2-4 - D400 - 6 on 5 – Pro – Diagrams

Offense:

Face-off and set up in 1-3-2



Two players fight for all loose pucks and setting up at the half wall.



Defense:

Use a diamond to defend when the puck is at the mid-point.

Pressure the puck at the half wall and defend from the net out with sticks in passing lanes.

